

A product of Nexusinfo

# COMPLETE ERP SOLUTION

FOR EDUCATIONAL INSTITUTION

LMS

OCM



# ABOUT NEDUSOFT

The Nexusinfo's Nedusoft is a fully integrated software product that has off lately been exclusively designed and developed for Educational Institutions with a decade of Research and Development.

Nedusoft provides data based compilation of students right from Admission to issuance of Transfer Certificate and Alumni. Issue of color Photo Id card, Payment of Fee payment, attendance, conduct of Internal Exams Management(CPG, HTC, Report Card), Generation of Question Papers from the Question Bank, Printing of Marks card, Hall ticket and performance related information providing access to their parents through Web Portal and Mobile App.

Details of Admin, Teaching and non teaching staff, their Payroll, payments, individual performance of teachers, their assignments, conduct of classes, time table and other services to generate specific/widely focused information by maintaining a centralized database with separate module for Admission, Fee Payment, Attendance, Exams, Library, Inventory control, Payroll, Finance and Accounts, User management, web report etc.

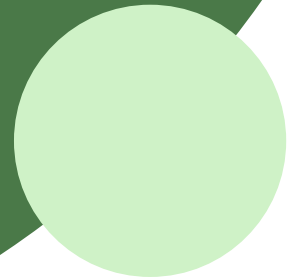
NEDUSOFT has been designed from the ground up to reimagine every facet of education delivery. From increasing administrative efficiency to an engaged faculty network and most importantly, holistic improvement of student performance, the platform is fully modular and customizable and integrates seamlessly with existing technologies.

Get an overview of your Faculty's performance, see schedules, student feedback and class performance. Track faculty productivity and prescribe remedial measures easily.

# OCM



## ONLINE CLASSROOM MANAGEMENT



## ABOUT NEDUSOFT OCM

The tool enables scheduling & conducting Online Classes, marking attendance & assignment wrapped up in the ERP itself.

It simplifies the process, eliminates the multi platform dependency & stimulates learning with the integrated white board teaching technique.



# Features

in our Online Classroom Management Solution



## WEB CONFERENCING/LIVE CLASS

Teach students by web conferencing, conduct internal meetings between teachers and management.



## SCREEN SHARING

Screens can be shared between the users, which helps them to copy, edit and much more for any screen.



## MULTI-USER WHITE BOARD

Teachers can easily explain to the students by using the whiteboard, there is a facility to draw, and interact with students, share the whiteboard with students.



## BREAKOUT ROOMS

Create groups and add users in this breakout room for effective teamwork.



## HD AUDIO

With seamless HD audio communication between teachers and students will be more interactive.



## POLLING

Teachers can conduct polling through these features and make a session interactive with students.



## CHAT

Interact with students by personal messages/ public messages

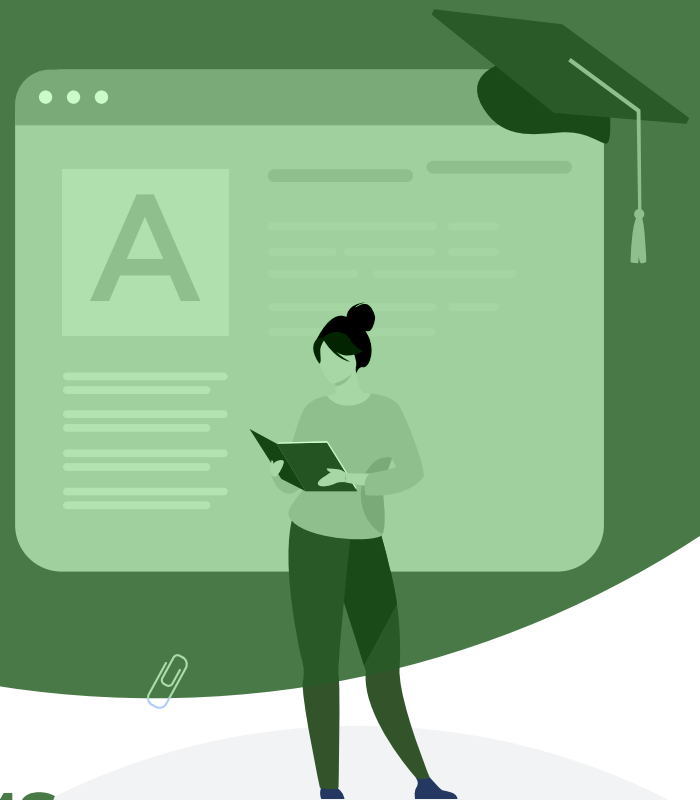


## EMOJIS

Students and participants can use these features to express their feelings and review the faculty.

# LMS

## LEARNING MANAGEMENT SYSTEM



## ABOUT NEDUSOFT LMS

LMS helps automate teaching and learning by allowing Instructors (Teachers) to create educational content (lessons), organize it in modules, deliver it internally to the Learners (Students) enrolled in the course, and monitor and assess the performance of Learners.

On account of being simple, user-friendly, and convenient, LMS became a preferred choice of many educational institutions to move classes online. Covid-19 pandemic has quickened the speed of replacing classroom-based learning with digital learning platforms. Today most of the Schools and Colleges have embraced LMS to deliver education and training to students.



# Features

in our Learning Management System

## NEXUS LMS IS A RIGHT LMS FOR WONDERFUL LEARNING.

A product of Nexusinfo, it encompasses the best features of the LMS concept. It brings the Instructors and Learners together on a virtual platform for online delivery and reception of educational content anywhere and at any time.

- Create & Assign Lesson Planner
- Create Semesters, Terms, Subjects
- Create Quizzes, Notes, Rich Teaching Content
- Create Class Schedules, Lesson Plans
- Define Periods/ Lab Schedule
- Track Attendance, Assignments, Groups/Teams
- Assign Marks, Grades, Ranks
- Manage Timetable
- Provide Certificates, Mark Sheets, Report Card etc.,
- Automated Virtual Classrooms

# NEDUSOFT **FEATURES**

In essence, our product is SAS based application precisely for educational institutions. What sets it apart from other similar products, however, are the innovation and experience that have gone into its development, making it incredibly intuitive and scalable to match the changing needs of a growing educational business.

01

## **APPLICATION & ADMISSION MANAGEMENT**

Application & Admission Management Module simplifies and accelerates the colossal task that every school/college has to undergo each year for inducting new students.

It enables to keep a track on Online Applications, Student Registration, Interviews, Selection, Results and generation of Fee receipts on Admission.

02

## **LMS (LEARNING MANAGEMENT SYSTEM)**

Nedusoft LMS is ready platform and it can be integrated with wide array of open or proprietary LMS programs available in the market.

LMS is an integral part of the futuristic and technique-based teaching system in School and College in current era.

Lesson Planning, Content sharing and other features are in-built that makes the software Learning Universe in itself.

03

## **OCM (ONLINE CLASSROOM MANAGEMENT)**

Nedusoft is an OCM ready platform and it can be integrated with wide array of open or proprietary LMS programs available in the market.

OCM is an integral part of the learning technique used in the pandemic across the globe that allows the student and teacher engage interactively.

04

## **ATTENDANCE MANAGEMENT**

Attendance Module simplifies the attendance process and the report is made available instantly to the School Management.

Nedusoft is designed to offer flexibility in maintaining Online Attendance of students / staff through PC or other electronic devices. Feature is in-built to send SMS/mail to the parent in case the student is found absent

05

## **EXAMINATION & REPORT CARD MANAGEMENT**

Examination & Report Card Module enables to track the progress of students at different levels and generate the report card as per the desired template.

We can Map the progress of every child from the time of Admission to Alumni

06

## **LIBRARY MANAGEMENT**

Library Management facilitates end to end management of Library Process viz Issuance, return, fine and bar coding.



**07**

## **STAFF MANAGEMENT**

Record of academic, professional, skill, medical, family of teaching/non-teaching staff and their daily activities are recorded in this module. Additionally, it offers the lesson plan update for the teaching staff.

**08**

## **FEE MANAGEMENT**

Fees Module enables the configuration of different Fee Types and Generation of fee receipts. It offers the flexibility of defining different fees to different students of same class based on their different type of categorisation as per state and national laws.

Additionally, it allows integration of different discounts like management, staff, fee waiver etc to avoid any discrepancies in accounts and eases reconciliations.

**09**

## **INQUIRY MANAGEMENT**

Enquires are logged, tracked, and managed systematically so that concerned teams can take appropriate action. Automated system that works on the front line so that every new enquiry is handled with the care it deserves.

**10**

## **HRMS & PAYROLL MANAGEMENT**

Details of the staff salaries, incentives, bonuses, deductions, leave & loan management, net pay are managed and processed in this module.

## 11

### **FINANCE AND ACCOUNTS**

It's a complete package of accounts having features like creation of groups/ledgers, Voucher like payments/receipts/general/contra etc.

The module offers generation of Income/Expenditure report and other business as usual reports.

## 12

### **USER MANAGEMENT**

This module plays an important role in offering security at different levels for management of this ERP software, where the administrator will have sole access to the entire system, vesting the limited rights for different users will prevent unauthorised access. This module assigns the right to users on every screen for adding/ updating/ deleting/ only viewing and printing at user group level and individual.

## 13

### **INVENTORY MODULE**

This module covers all purchases, issued and stock maintenance of items, it offers wide range of features like generation of indent/requisition, inquiry/comparative statement/ purchase orders material inward/return vendor-wise, issue and return of the items employee-wise, plus various reports useful for inventory control.

## 14

### **HOSTEL MANAGEMENT**

Assignment of Hostel to student on their admission with the Room/Bed availability and allotment in real time. Access to gate passes and their attendance makes simple and easy to monitor their movement efficiently.

15

## TRANSPORT MANAGEMENT

Our Module GPS Tracking solution keeps parents informed about the current location of their child in real time. The App sends timely notifications to parents about the scheduled routes, location of school buses as well as boarding and de-boarding information of their child. It gives Real Time tracking of the school busses and Access to control the Bus Drivers.

16

## USER MANAGEMENT

It offers wide range for all activities by scheduling/informing the parents for any social events /sending reminders about nonpayment of fee/attendance shortage/performance of student etc.

# TESTIMONIALS & CASE STUDIES



## **Mr Sen Thamizan**

Principal, Army Institute of Hotel Management  
Bangalore, India.

Indeed it is my profound inclination to mention that Nexusinfo has been a true partner for our endeavor and avocation. Your continued and valuable support since 2010 is praise worthy. Needless to mention that, your proactive patronage and perseverance is further providing us impetus to be the best Hotel Management Institute in the country. We look forward to have your continued professional co-operation.



## **Ms Bella**

Twyla Nursery,  
Qatar.

After an extensive evaluation of more than a dozen software Vendors to develop the core framework of our next generation ERP, we chose Nexusinfo for their futuristic vision and flexibility of the solution.



## **Mr Haridas**

Indirapriyadarshini School  
Bangalore, India.

Going forward, no education institution can survive without digitization, that connect academic with learner and teacher; teachers and management along with parents and so on. Nexusinfo can provide this essential pillar for



## **Mr Salma Siddiqi**

Director, Universal Institute  
Kuwait.

With Nedusoft we embarked into our journey of digitalization & very happy to get associated with them. We received excellent support during on-boarding, Staff Training & on-demand customization/support before and after installation.

